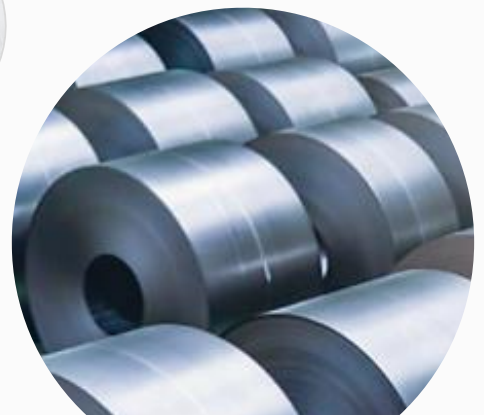
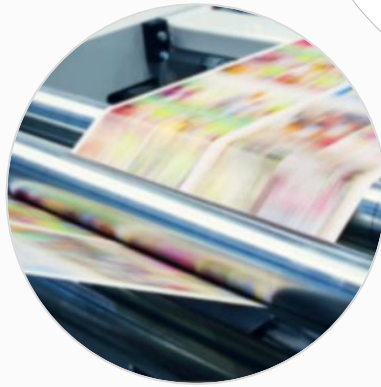





# Ultrasound, sensing the web



Edge position control

WEB guiding

Unictron’s ultrasonic transducers for EPC (Edge Position Control) applications have been developed using our in-house piezoceramics and acoustic matching layers as well as the most advanced patented technologies. The ultrasonic transducers are very suitable for web guiding and edge position control with high consistency and reliability.

Model Name	A150A	A170W1	A200H1	A300A
				
Frequency (kHz)	150	170	200	300
Dimensions (mm)	OD(Face) 17.15 H 12.7	L54.6xW18.2x H10.0	OD(Face) 18.8 H 10.7	OD(Face) 9.9 H 7.3
Proportional band (mm)	7-8	>28	8-9	array
Housing Material	Aluminum	Plastic	Aluminum	Plastic
Major Applications	Web guiding	Web guiding	Web guiding	Web guiding Double feed

## Industries & Applications

- Paper plant
- Printing industry
- Package manufacturing
- Textile industry
- Steel plant
- Plastic and rubber industry
- Panel manufacturing
- Film manufacturing
- Edge position control
- Proximity measurement

## Features

- High sensitivity
- High response
- High performance
- High reliability
- Suitable for most materials